



TRIDENT
STAR GLOBAL



Crisis & Operations Planning Services

Situation Report - example



Situation Report - example

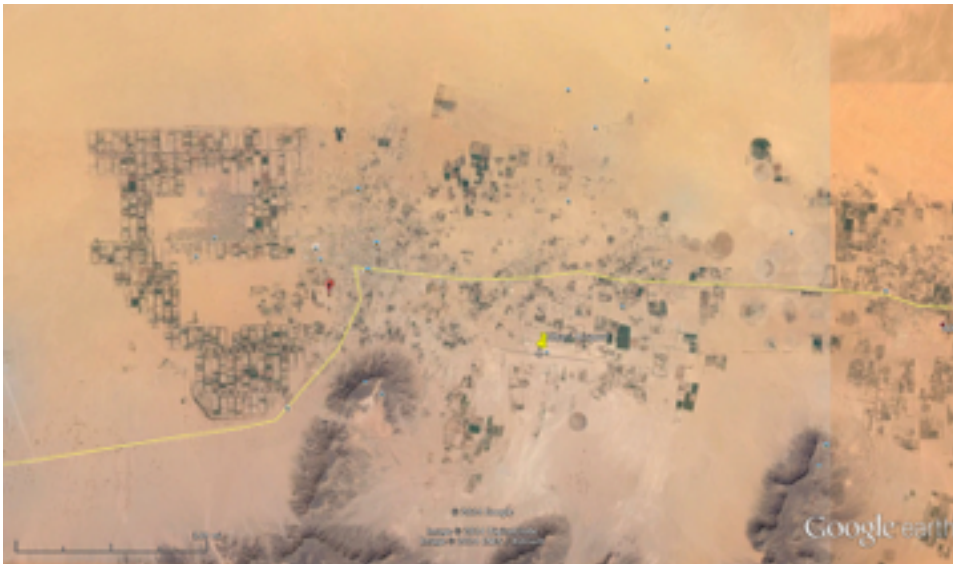
Date: 26 August 2015 (DTG 261800ZAUG15)

From: Trident Star Global
To: Company X, Project Manager,

Subj: INTELLIGENCE SUMMARY - UBARI, LIBYA, Friday, 26 AUG 2015

Sources: VARIOUS (full-spectrum)

Ref: (1) Google Earth image of Ubari and vicinity
(2) Image of Katiba 315 Camp - Front Gate



Reference 1.



Reference 2.

1. Background. Ubari and the surrounding vicinity (reference 1.) have been relatively peaceful amidst the strife enveloping the northern sector of Libya. Most of the militia



Situation Report - example

violence has been focused against rival militia and government forces that populate the coastal region.

2. In Ubari, as of 1200Z today, a total of 12 people were killed. The fighting is focused between Tuareg and Al-Tebbo tribes. This was noted in a local broadcast.

“The latest fatalities bring to eight the number of people killed in clashes between the Tuareg people and members of the Al-Tebbo tribe in the town of Ubari in southern Libya, the source said.

The violence started on Wednesday (25 August 2015) when Al-Tebbo tribesmen attacked armed Tuareg who were manning a local police station.”

Additionally, the British Foreign Commonwealth Office, US Department of State, Libya Business News and SNE Special Projects issued travel warnings for avoiding travel to/from/within Libya and other countries have issued a warning for all non-Libyans to relocate out of country.

“Due to the current ongoing unstable situation within Tripoli, SNE advises that all non-essential expat client personnel and their dependents should consider relocating outside of the country where possible.

Only business essential movements should take place within Tripoli city limits and no movement should be attempted in dark hours or near the area of Tripoli International Airport and surroundings areas which are affected by the ongoing militia fighting.

SNE is advising NO travel should be made to Benghazi until the current situation shows signs of stability.

The British FCO and US State Department are still advising against No travel to Libya and have advised all their citizens to leave the country at the first opportunity available.”

3. Security sources on the ground in Ubari indicate increasing instability. The fighting remains between the two rival tribes, but growing opportunity to exploit foreign workers and infrastructure projects is being seen. Projects that support oil and gas, mining, energy and water are key targets. The Ubari Airport is closed.

“Right now are heavy fights in Ubari, especially in the south of the airport, which is closed because of that.” DTG 261744ZAUG15

4. In Ubari is Katiba 315 Camp (reference 2.) that is an Islamist training facility. There has been no movement of personnel from this camp. However, often the unrest and fighting provide a training ground and mask for these groups to attack non-Libyan personnel.



Situation Report - example

5. Assessment. The situation is tenuous. The potential for escalation is high. Targets will remain western-engineered infrastructure facilities, oil&gas facilities and the associated personnel. Fighting is continuing and becoming heavier. Consideration of canceling Sunday, 28 August 2015 scheduled flight and evacuating all Company X personnel.
6. Trident is working with Libyan CAA, government and security personnel and will get Ubari Airport opened for the evacuation flights when requested.

Respectfully submitted,

Kenneth C. Klothe
President/CEO, Trident Star Global